

1st Alto

1514

Paul Busby
PRS

$\bullet = 80$
accents sim
mp

13

mf

$\bullet = 200$
old tempo = \bullet new
sfz

27

12 39 *f*

49

60

72

4

80

84

88

till ready

100

Tempo Primo ♩ = 80

2nd Alto *no vib*

1514

Paul Busby
PRS

$\text{♩} = 80$ *accents sim*

mp

13 *(solo with trumpet)*

A^{7+9-9}

mf

A^{7+9-9} A^{7+9-9}

$\text{♩} = 200$

old tempo = ♩ . new

$F\#m$

f

27 *wind down* 39 49

$F\#m$ $F\#m$

for 8 bars for 4 bars

10

f

4

60

72

4

mf

80

mp

88

p

till ready

rit.

100 **Tempo Primo** ♩ = 80

p *rit.*

1st Tenor *no vib*

1514

Paul Busby
PRS

$\text{♩} = 80$ accents *sim*

mp

13

mf

$\text{♩} = 200$

old tempo = new

sfz

27

12

39

2

Bm

49

3

Gm

for 8 bars

for 8 bars

f

Ensemble

60

3

Gm

72

4

Bm

for 8 bars

80

Dm

84

Gm

D7+9-9 4

when ready rit and end on

8 repeat as required

Tempo Primo ♩ = 80

p *rit.*

2nd Tenor no vib

1514

Paul Busby
PRS

$\text{♩} = 80$
accents sim
mp

13

mf

$\text{♩} = 200$
old tempo = new

sfz

27

12

39

f

49

60

72

4

80

84

88

till ready

100 Tempo Primo ♩ = 80

2nd Tenor no vib

1514

Paul Busby
PRS

$\text{♩} = 80$

accents sim

mp

13

mf

$\text{♩} = 200$

old tempo = new

sfz

27

12

39

f

49

4

60

4

72

4

80

84

88

till ready

100 Tempo Primo ♩ = 80

Baritone

1514

no vib

Paul Busby
PRS

$\text{♩} = 80$ *on bari* > > > > > *accents sim*

mp

13

mf

$\text{♩} = 200$
 ● old tempo = ● new

sfz

27

39

f

49

60

4 72

80 84

88

till ready

100 **Tempo Primo** ♩ = 80

Baritone/Flute

1514

no vib

Paul Busby
PRS

$\text{♩} = 80$ *on bari* *accents sim*

mp

13

mf

$\text{♩} = 200$ TO FLUTE

old tempo = new

27

12

39

f

49

60

72

80

mf

84

mp

88

p

TO BARI till ready

rit.

100

Tempo Primo ♩ = 80

p

rit.

This is the preferred part

1st Trumpet

1514

Paul Busby
PRS

$\text{♩} = 80$

3 2

2 *Trombone/Alto cue*

13

mf *accents sim*

$\text{♩} = 200$
old tempo = new

sfz

27 12 39

f

4

49

60

4

72

4

80

mf

84

mp

88

p

till ready

rit.

100 **Tempo Primo** ♩ = 80

rit.

2nd Trumpet

1514

Paul Busby
PRS

$\text{♩} = 80$ plunger D7+9-9 D7+9-9

mp

D7+9-9

D7+9-9 **13** solo with alto D7+9-9

mf

D7+9-9

D7+9-9

D7+9-9

D7+9-9

$\text{♩} = 200$
old tempo = ♩ new

27 Bm Bm Bm wind down Bm

f

for 8 bars for 4 bars

39 to open **10** **49**

f

60 4

f

f

72 4

f

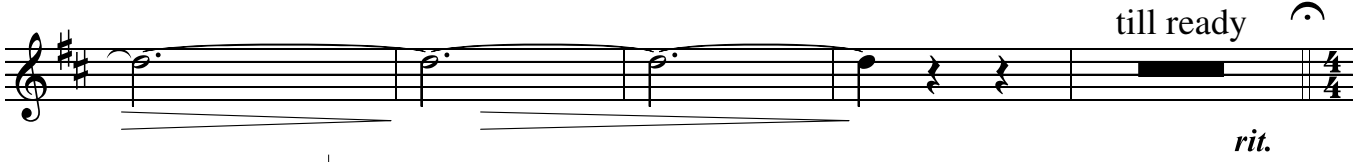


80



84

88



100 **Tempo Primo** ♩ = 80



4 72

80

84

88

till ready

100 Tempo Primo ♩ = 80

4th Trumpet

1514

Paul Busby
PRS

♩ = 80

3 2

2

Trombone/Alto cue

13

accents sim

mf

♩ = 200
old tempo = ♩ · new

sfz

27

12

39

f

4

49

60

4

4 72

80

mf

84

mp

88

p

till ready

100 **Tempo Primo** ♩ = 80

rit.

1st Trombone

1514

Paul Busby
PRS

♩ = 80

accents sim

mp

13

mf

♩ = 200

old tempo = new

sfz

27

12

39

f

49

4

60

4

4 72

80

mf 84

mp 88

p 92 96 100 104 108 112 116 120 124 128 132 136 140 144 148 152 156 160 164 168 172 176 180 184 188 192 196 200 204 208 212 216 220 224 228 232 236 240 244 248 252 256 260 264 268 272 276 280 284 288 292 296 300 304 308 312 316 320 324 328 332 336 340 344 348 352 356 360 364 368 372 376 380 384 388 392 396 400 404 408 412 416 420 424 428 432 436 440 444 448 452 456 460 464 468 472 476 480 484 488 492 496 500 504 508 512 516 520 524 528 532 536 540 544 548 552 556 560 564 568 572 576 580 584 588 592 596 600 604 608 612 616 620 624 628 632 636 640 644 648 652 656 660 664 668 672 676 680 684 688 692 696 700 704 708 712 716 720 724 728 732 736 740 744 748 752 756 760 764 768 772 776 780 784 788 792 796 800 804 808 812 816 820 824 828 832 836 840 844 848 852 856 860 864 868 872 876 880 884 888 892 896 900 904 908 912 916 920 924 928 932 936 940 944 948 952 956 960 964 968 972 976 980 984 988 992 996 1000 1004 1008 1012 1016 1020 1024 1028 1032 1036 1040 1044 1048 1052 1056 1060 1064 1068 1072 1076 1080 1084 1088 1092 1096 1100 1104 1108 1112 1116 1120 1124 1128 1132 1136 1140 1144 1148 1152 1156 1160 1164 1168 1172 1176 1180 1184 1188 1192 1196 1200 1204 1208 1212 1216 1220 1224 1228 1232 1236 1240 1244 1248 1252 1256 1260 1264 1268 1272 1276 1280 1284 1288 1292 1296 1300 1304 1308 1312 1316 1320 1324 1328 1332 1336 1340 1344 1348 1352 1356 1360 1364 1368 1372 1376 1380 1384 1388 1392 1396 1400 1404 1408 1412 1416 1420 1424 1428 1432 1436 1440 1444 1448 1452 1456 1460 1464 1468 1472 1476 1480 1484 1488 1492 1496 1500 1504 1508 1512 1516 1520 1524 1528 1532 1536 1540 1544 1548 1552 1556 1560 1564 1568 1572 1576 1580 1584 1588 1592 1596 1600 1604 1608 1612 1616 1620 1624 1628 1632 1636 1640 1644 1648 1652 1656 1660 1664 1668 1672 1676 1680 1684 1688 1692 1696 1700 1704 1708 1712 1716 1720 1724 1728 1732 1736 1740 1744 1748 1752 1756 1760 1764 1768 1772 1776 1780 1784 1788 1792 1796 1800 1804 1808 1812 1816 1820 1824 1828 1832 1836 1840 1844 1848 1852 1856 1860 1864 1868 1872 1876 1880 1884 1888 1892 1896 1900 1904 1908 1912 1916 1920 1924 1928 1932 1936 1940 1944

2nd Trombone

1514

Paul Busby
PRS

♩ = 80

accents sim

mp

13

mf

♩ = 200
old tempo = new

sfz

27

f

49

60

72

4

80

84

88

till ready

100 Tempo Primo ♩ = 80

3rd Trombone

1514

Paul Busby
PRS

♩ = 80

accents sim

mp

Musical staff with notes and rests. The staff is in bass clef with a 4/4 time signature. It contains several measures of music, including a half note, a quarter note, and a quarter rest.

Musical staff with notes and rests. The staff is in bass clef with a 4/4 time signature. It contains several measures of music, including a half note, a quarter note, and a quarter rest.

13

mf

Musical staff with notes and rests. The staff is in bass clef with a 4/4 time signature. It contains several measures of music, including a half note, a quarter note, and a quarter rest.

Musical staff with notes and rests. The staff is in bass clef with a 4/4 time signature. It contains several measures of music, including a half note, a quarter note, and a quarter rest.

♩ = 200

old tempo = ♩ · new

sfz

Musical staff with notes and rests. The staff is in bass clef with a 4/4 time signature. It contains several measures of music, including a half note, a quarter note, and a quarter rest.

27

12

39

f

Musical staff with notes and rests. The staff is in bass clef with a 4/4 time signature. It contains several measures of music, including a half note, a quarter note, and a quarter rest.

49

4

Musical staff with notes and rests. The staff is in bass clef with a 4/4 time signature. It contains several measures of music, including a half note, a quarter note, and a quarter rest.

60

4

Musical staff with notes and rests. The staff is in bass clef with a 4/4 time signature. It contains several measures of music, including a half note, a quarter note, and a quarter rest.

Musical staff with notes and rests. The staff is in bass clef with a 4/4 time signature. It contains several measures of music, including a half note, a quarter note, and a quarter rest.

72

4

80

84

mf

88

mp

p

till ready

rit.

100 **Tempo Primo** ♩ = 80

p

rit.

72

4

80

84

88

till ready

rit.

100 Tempo Primo ♩ = 80

Piano (organ sound)

1514

Paul Busby
PRS

$\text{♩} = 80$ C B \flat C B \flat C accents *sim* C B \flat C G \flat A \flat B \flat

C C B \flat C D \flat E \flat G \flat C

A \flat B \flat C D \flat E G \flat C

13 C B \flat C B \flat C C B \flat C G \flat A \flat B \flat

mf

C C B \flat C D \flat E \flat G \flat C

A \flat B \flat C D \flat E G \flat Am >

$\text{♩} = 200$
old tempo = new

with horns or can omit

27 12 39 Am E \flat m Gm B \flat m Am

f

49 Em Gm Cm E \flat m Am Dm Fm

60 Cm Fm Am D \flat m

A \flat m B \flat m Fm 4

72 Fm Ebm Cm Bbm Dbm Bbm Am

mf mp

80 Cm Bbm

mf mp

84 Fm Ebm 88 C

p

till ready

rit.

Tempo Primo ♩ = 80

100 C Bb C Gb Ab Bb C

p rit.

Guitar

1514

Paul Busby
PRS

$\bullet = 80$ accents *sim*

mp

13

mf

$\bullet = 200$
 \bullet old tempo = \circ new

use just triads

with horns

27

39

Am

Am Ebm

Gm

Bbm

Am

2

for 12 bars

4

8

49

Em

Gm

Cm

Ebm

Am

Dm

Fm

Fm

4

60

8

Cm

Fm

Am

Dbm

Abm

Bbm

Fm

Fm 4 8

72 Fm Ebm Cm Bbm Dbm Bbm Am

Am Gm Cm Bbm

mf mp

84 Fm Ebm

88 C till ready

p rit.

100 Tempo Primo ♩ = 80

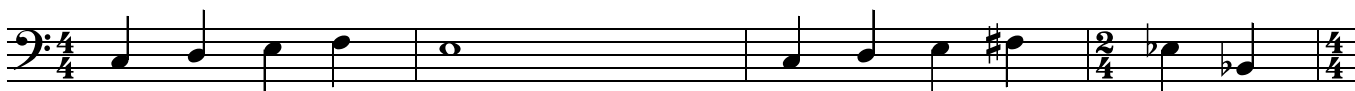
p rit.

Bass optional arco

1514

Paul Busby
PRS

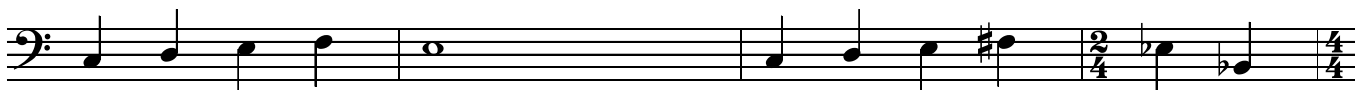
♩ = 80



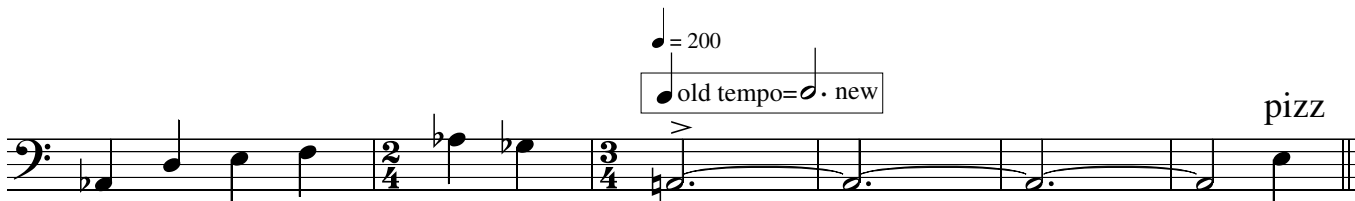
mp



13



mf



♩ = 200
old tempo = ♩ . new

pizz

27

in 3
Am

39

as is
Am

E♭m

Gm

B♭m

Am



49

as is

Em

Gm

Cm

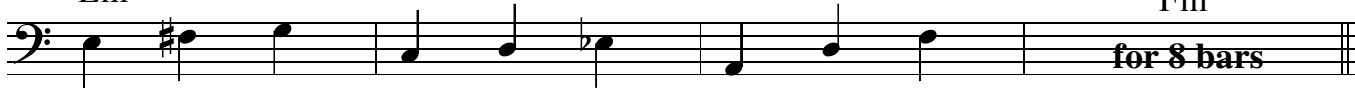
E♭m

Am

Dm

Fm

Fm



60

as is

Cm

Fm

Am

D♭m

A♭m

B♭m

Fm

Fm



72

Fm

E♭m

Cm

B♭m

D♭m

B♭m



Am Gm




80 Cm Bbm




84 Fm Ebm



88 C with Tenor till ready **100** Directed



rit when tenor does



rit.

♩ = 80

1514

Paul Busby
PRS

Drums

with Tpt

Drum notation for measures 1-12. The piece starts in 4/4 time, changes to 2/4 at measure 5, and returns to 4/4 at measure 8. The notation includes a bass clef, a key signature of one sharp (F#), and a dynamic marking of *mp*. Above the staff, there are 'x' marks indicating specific drum hits. The notation shows a steady bass line with various drum patterns.

13

with Tpt & Alto

Drum notation for measures 13-26. The piece continues in 4/4 time, changes to 2/4 at measure 16, and returns to 4/4 at measure 19. The dynamic marking is *mf*. The notation includes a bass clef, a key signature of one sharp (F#), and 'x' marks indicating drum hits. The bass line remains consistent with the previous section.

♩ = 200
old tempo = new

Drum notation for measures 27-38. The piece changes to 3/4 time at measure 27. The dynamic marking is *f*. The notation includes a bass clef, a key signature of one sharp (F#), and 'x' marks indicating drum hits. The bass line continues with the same rhythmic pattern.

27

jazz waltz - fill out (no piano)

play 12

Drum notation for measures 39-48. The piece returns to 4/4 time. The dynamic marking is *f*. The notation includes a bass clef, a key signature of one sharp (F#), and 'x' marks indicating drum hits. The bass line continues with the same rhythmic pattern.

Horns

Horn notation for measures 39-48. The notation includes a bass clef, a key signature of one sharp (F#), and a dynamic marking of *f*. The notes are marked with accents (>). The piece is in 4/4 time.

49

Horn notation for measures 49-59. The notation includes a bass clef, a key signature of one sharp (F#), and a dynamic marking of *f*. The notes are marked with accents (>). The piece is in 4/4 time.

60

Horn notation for measures 60-68. The notation includes a bass clef, a key signature of one sharp (F#), and a dynamic marking of *f*. The notes are marked with accents (>). The piece is in 4/4 time.

72

80

84

mf

mp

88

p

till ready

rit when tenor does

100 Tempo primo ♩ = 80

p

rit.

let ring

on cue

Leadsheet

1514

Paul Busby
PRS

$\text{♩} = 80$ *Tbns/Sxs div* *Trumpet fill* *accents sim*

mp

Trumpet fill *Trumpet fill*

Trumpet fill

13 *Ens div* *Tpt & Alto fill*

mf

Tpt & Alto fill *Tpt & Alto fill*

Tpt & Alto fill *Tpt & Alto fill*

$\text{♩} = 200$
old tempo = new

sfz

27 **39** *Ens div* *Tenor fill*

f

12 bars Tpt & Alto

49 *Ens div*

4 bars

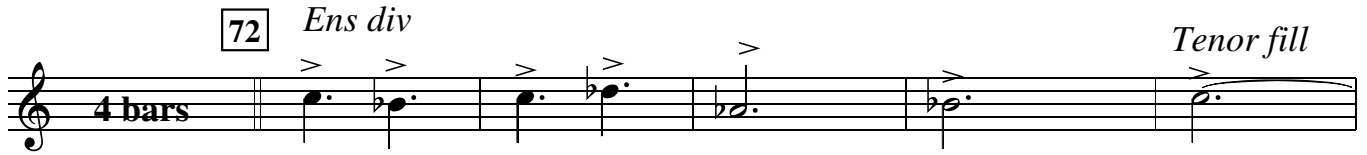
60 *Ens div*

4 bars

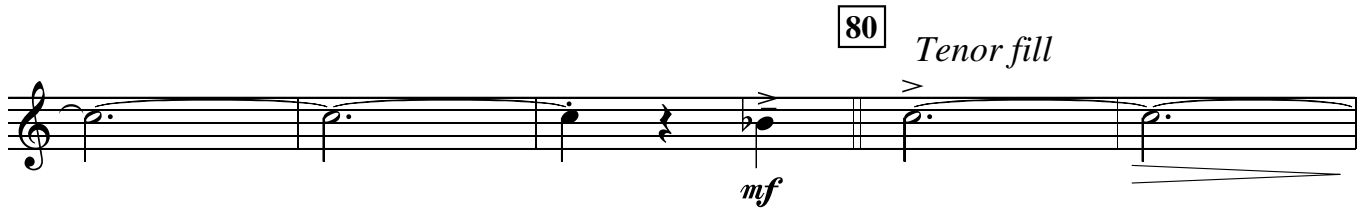
Tenor fill

Tenor fill

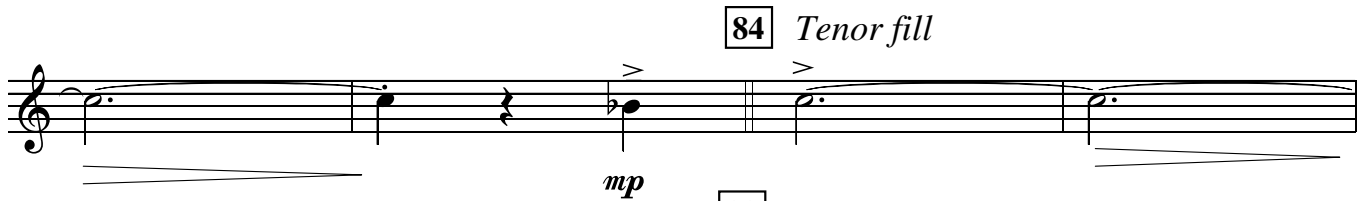
72 *Ens div* *Tenor fill*



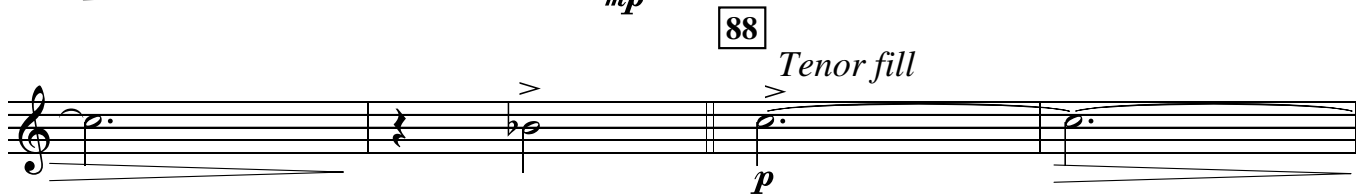
80 *Tenor fill*



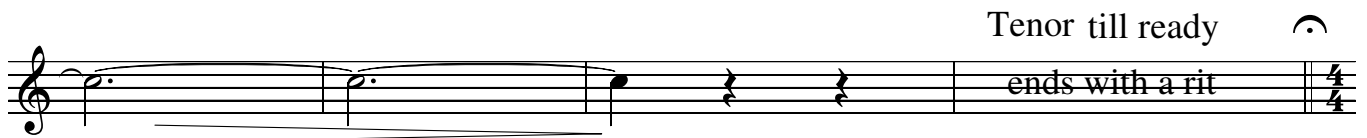
84 *Tenor fill*



88 *Tenor fill*



Tenor till ready ☺
ends with a rit



after Tenor lands up on C concert

Direct
100 **Tempo Primo** ♩ = 80

