

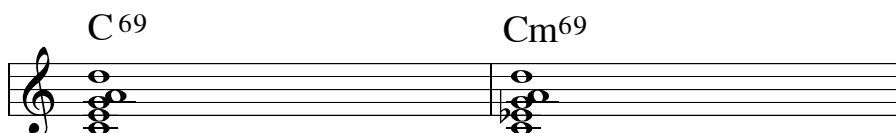
## **THE 69 CHORD AND PENTATONIC SCALE**

**Most musicians are familiar with the number 69 for one reason or another. The 69 chords are just as sexy, as for the pentatonic scales, wow! Read on.**

## 6/9 CHORDS AND PENTATONIC SCALES

A major 6th chord is often used in place of a major 7th chord. Likewise a minor 6th chord is often used in place of a minor major 7th chord.

To these chords a (major) ninth note can be added to give a richer chord:



These chords are used in place of major 7th and minor major 7th where the melody note is the root of the chord owing to the semitone clash between the major 7th note and the root. The chords can also be used for their own sake when required.

## PENTATONIC SCALES

If the notes of a 6/9 chord are played consecutively, we get a pentatonic scale.

The 9th is placed down an octave to become the 2nd:

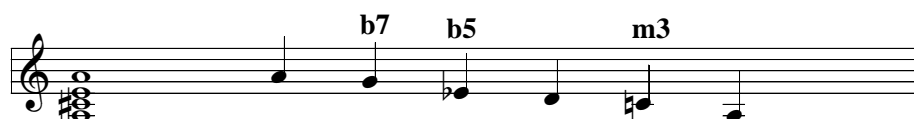


Many folk tunes are based on these scales, amongst them Scottish, Japanese, and African songs. Negro spirituals are also based on these scales, eg. Swing Low Sweet Chariot.

They can be regarded as being abbreviated versions of major and melodic minor scales omitting the fourth and the seventh notes.

## THE BLUES SCALE

If a minor pentatonic scale is started on the 6th note we get a blues scale:



Used against a major chord or a dominant seventh built on the lowest note we get the 3 blues notes - the flattened 7th, flattened 5th and the minor 3rd.

Sometimes the major 3rd can also be used as indeed can the natural 5th.

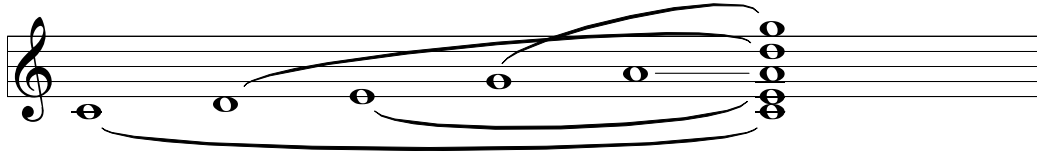
The blues scale is used in jazz, pop music and gospel music.

If you want a quick way of finding the blues scale for any key, think of the minor pentatonic scale (1 2 b3 5 6) a minor 3rd above the root of the chord.

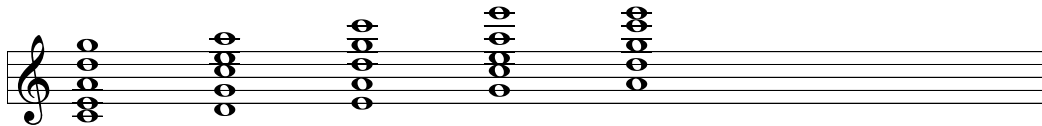
In some funky music you also get a pentatonic chord played against a chord based on the same note as the start of the scale, ie. a C major or minor pentatonic scale played against a C chord. Bear in mind that major seventh chords are not used in bluesy or funky progressions.

## 69 CHORDS

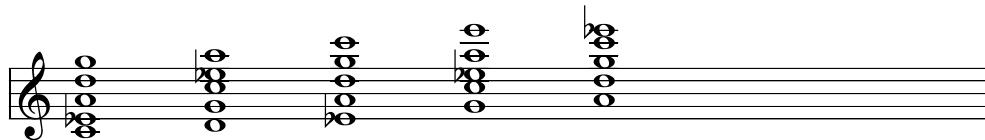
You can make chords out of a pentatonic scale just as you can from a major scale by placing alternative notes on top of one another:



This chord can also be inverted. Here they are rearranged and built on each note of the scale.



Chords built from the minor pentatonic scale are as follows:



Remember a major pentatonic is 1 2 3 5 6 and a minor one is 1 2 b3 5 6.