

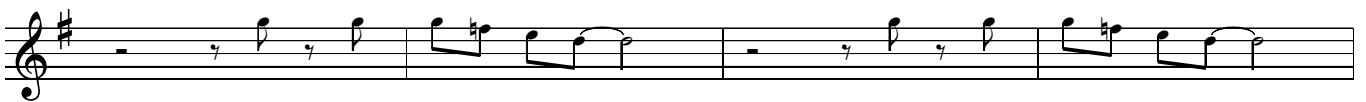
# LOS ECOS

Concert

*cue: piano*



tune starts



solo on C major scale throughout

continue soloing till tune comes in again



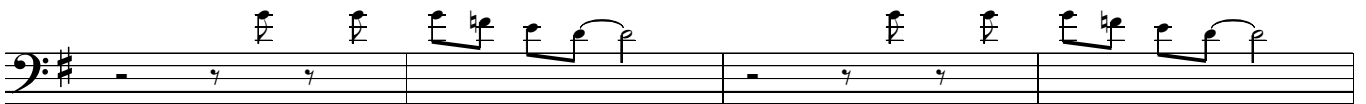
# LOS ECOS

Concert bass clef

*cue: piano*

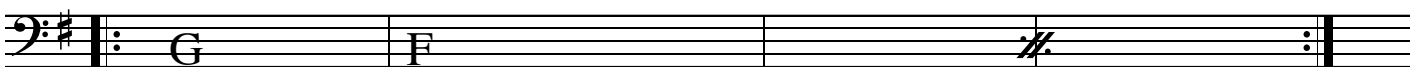


tune starts



solo on C major scale throughout

continue soloing till tune comes in again



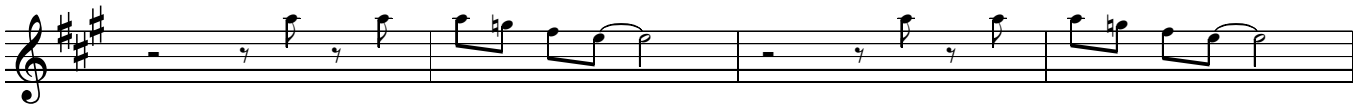
# LOS ECOS

Bb pitch

*cue: piano*

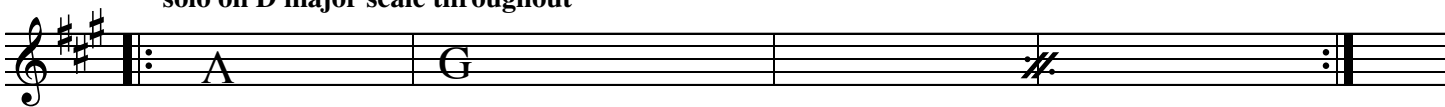


tune starts



solo on D major scale throughout

continue soloing till tune comes in again



# LOS ECOS

Eb pitch

*cue: piano*

The first staff is in bass clef with a key signature of three sharps (F#, C#, G#). It contains four measures of music. The first measure has a dotted quarter note followed by an eighth note. The second measure has a quarter note followed by a quarter rest. The third measure has a dotted quarter note followed by an eighth note. The fourth measure has a quarter note followed by a quarter rest. The piece ends with a double bar line and repeat dots.

tune starts

The second staff is in treble clef with a key signature of three sharps. It contains four measures of music. The first measure has a quarter rest followed by a quarter note. The second measure has a quarter note followed by a quarter rest. The third measure has a quarter note followed by a quarter rest. The fourth measure has a quarter note followed by a quarter rest. The piece ends with a double bar line and repeat dots.

The third staff is in treble clef with a key signature of three sharps. It contains four measures of music. The first measure has a quarter rest followed by a quarter note. The second measure has a quarter note followed by a quarter rest. The third measure has a quarter note followed by a quarter rest. The fourth measure has a quarter note followed by a quarter rest. The piece ends with a double bar line and repeat dots.

The fourth staff is in treble clef with a key signature of three sharps. It contains four measures of music. The first measure has a quarter rest followed by a quarter note. The second measure has a quarter note followed by a quarter rest. The third measure has a quarter note followed by a quarter rest. The fourth measure has a quarter note followed by a quarter rest. The piece ends with a double bar line and repeat dots.

The fifth staff is in treble clef with a key signature of three sharps. It contains four measures of music. The first measure has a quarter rest followed by a quarter note. The second measure has a quarter note followed by a quarter rest. The third measure has a quarter note followed by a quarter rest. The fourth measure has a quarter note followed by a quarter rest. The piece ends with a double bar line and repeat dots.

The sixth staff is in treble clef with a key signature of three sharps. It contains four measures of music. The first measure has a quarter rest followed by a quarter note. The second measure has a quarter note followed by a quarter rest. The third measure has a quarter note followed by a quarter rest. The fourth measure has a quarter note followed by a quarter rest. The piece ends with a double bar line and repeat dots.

The seventh staff is in treble clef with a key signature of three sharps. It contains four measures of music. The first measure has a quarter rest followed by a quarter note. The second measure has a quarter note followed by a quarter rest. The third measure has a quarter note followed by a quarter rest. The fourth measure has a quarter note followed by a quarter rest. The piece ends with a double bar line and repeat dots.

The eighth staff is in treble clef with a key signature of three sharps. It contains four measures of music. The first measure has a quarter rest followed by a quarter note. The second measure has a quarter note followed by a quarter rest. The third measure has a quarter note followed by a quarter rest. The fourth measure has a quarter note followed by a quarter rest. The piece ends with a double bar line and repeat dots.

solo on A major scale throughout

continue soloing till tune comes in again

The final staff is in treble clef with a key signature of three sharps. It contains three measures of chord notation. The first measure is E major, the second is D major, and the third is a double sharp sign. The piece ends with a double bar line and repeat dots.