

# HAJNALKA

(pronounced Hohnalka)

Concert

orchestra



play

♩ orchestra on sign (4th time)

Dm $\Delta$

B $\flat$  $\Delta$ /  
A

Dm $\Delta$

C $\sharp$ 7(b9)



F $\sharp$ m $\Delta$

D $\Delta$ /  
C $\sharp$

B $\flat$  $\emptyset$  / E $\flat$ 7

E $\flat$  $\emptyset$ /  
A $\flat$



F $\emptyset$

B $\flat$ 7(b9)

E $\flat$ m $\Delta$

C $\emptyset$  / F7( $\sharp$ 9)

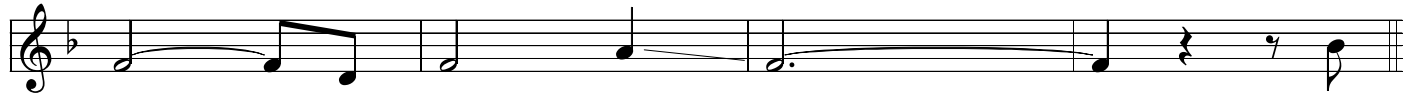


B $\flat$  $\Delta$

F7(-5)

E7(b9-5)

A7(+5)



Dm $\Delta$

B $\flat$  $\Delta$ /  
A

Dm $\Delta$

B $\emptyset$  / E7(-5)



Am $\Delta$

F $\Delta$ /  
E

C $\sharp$  $\emptyset$  / F $\sharp$ 7

F $\sharp$  $\emptyset$ /  
B



G $\sharp$  $\emptyset$

C $\sharp$ 7(b9)

F $\sharp$ m7

B7(b9)



Em $^{11}$

E $\emptyset$ /  
A

D6

♩ play on sign (4th time)



Gm $^{11}$

C $^{13}$

F $\sharp$ m $^{11}$

B $^{13}$



Fm $^{11}$

B $\flat$  $^{13}$

even

Em $^{11}$

A $^{13}$



Concert

Dm<sup>Δ</sup> G<sup>∅</sup> / D<sup>b</sup> / F<sup>Δ</sup> / C B<sup>∅</sup> B<sup>b</sup>7(-5)

Dm / A E<sup>∅</sup> / A / A<sup>7</sup> Dm (E<sup>∅</sup> / A)

repeat for solo -2 choruses  
then DS al  $\Phi$

Coda

rit. orchestra



bass clef

Dm $\Delta$  G $\emptyset$ / $D^{\flat}$  / F $\Delta$ / $C$  B $\emptyset$  B $\flat$ 7(-5)

Dm/A E $\emptyset$ /A A7 Dm E $\emptyset$ /A

repeat for solo -2 choruses  
then DS al  $\emptyset$

Coda

2/4

3/4

*rit.*

orchestra

# HAJNALKA

(pronounced Hoynalka)

Bb pitch

orchestra

play

♩ orchestra on sign (4th time)

Em $\Delta$  C $\Delta$ /  
B Em $\Delta$  D#7(b9)

G#m $\Delta$  E $\Delta$ /  
D# C $\emptyset$  / F7 F $\emptyset$ /  
B $\flat$

G $\emptyset$  C7(b9) Fm $\Delta$  D $\emptyset$  / G7(#9)

C $\Delta$  G7(-5) F#7-9-5 B7(+5)

Em $\Delta$  C $\Delta$ /  
B Em $\Delta$  C# $\emptyset$  / F#7(-5)

Bm $\Delta$  G $\Delta$ /  
F# D# $\emptyset$  / G7 G# $\emptyset$ /  
C#

A# $\emptyset$  D#7(b9) G#m7 C#7(b9)

F#m11 F# $\emptyset$ /  
B E6 play on sign (4th time)

Am11 D13 G#m11 C#13

Gm<sup>11</sup>

C<sup>13</sup>

even

F#m<sup>11</sup>

B<sup>13</sup>

Bb pitch

Em<sup>Δ</sup>

A<sup>∅</sup>  
E<sup>b</sup>

G<sup>Δ</sup>  
D

C#<sup>∅</sup>

C7(-5)

Em

A

F#<sup>∅</sup>  
B

B<sup>7</sup>

∅ Em

F#<sup>∅</sup>  
B

repeat for solo -2 choruses  
then DS al ∅

Coda

*rit.*

orchestra

# HAJNALKA

(pronounced Hoynalka)

E♭ pitch

orchestra

play

♩ orchestra on sign (4th time)

Bm $\Delta$  G $\Delta$ /  
F# Bm $\Delta$  A#7(b9)

D#m $\Delta$  B $\Delta$ /  
A# G $\emptyset$  / C7 C $\emptyset$ /  
F

D $\emptyset$  G7(b9) Cm $\Delta$  A $\emptyset$  / D7(#9)

G $\Delta$  D7(-5) C#7(b9-5) F#7(+5)

Bm $\Delta$  G $\Delta$ /  
F# Bm $\Delta$  G# $\emptyset$  / C#7(-5)

F#m $\Delta$  D $\Delta$ /  
C# A# $\emptyset$  / D#7 D# $\emptyset$ /  
G#

F $\emptyset$  B $\flat$ 7(b9) D#m7 G#7(b9)

C#m11 C# $\emptyset$ /  
F# B6 play on sign (4th time)

Em11 A13 D#m11 G#13

Eb pitch

Dm<sup>11</sup> G<sup>13</sup> even C<sup>#m</sup><sup>11</sup> F<sup>#13</sup>

Bm<sup>Δ</sup> E<sup>∅</sup>/<sub>B<sup>b</sup></sub> / D<sup>Δ</sup>/<sub>A</sub> G<sup>#∅</sup> G<sup>7(-5)</sup>

Bm / F# C<sup>#∅</sup>/<sub>F#</sub> F<sup>#7</sup> Bm C<sup>#∅</sup>/<sub>F#</sub>

repeat for solo -2 choruses then DS at

Coda

*rit.* orchestra