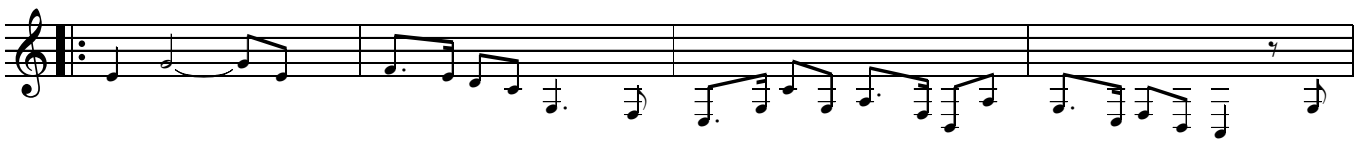
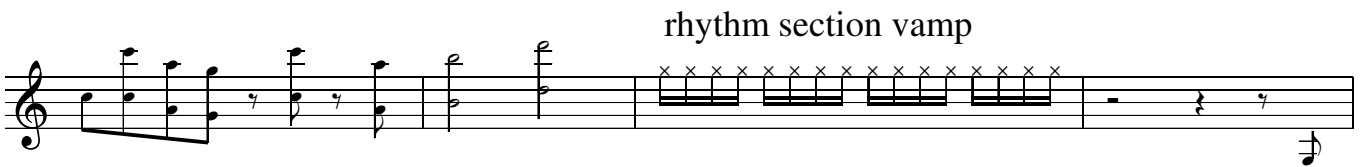
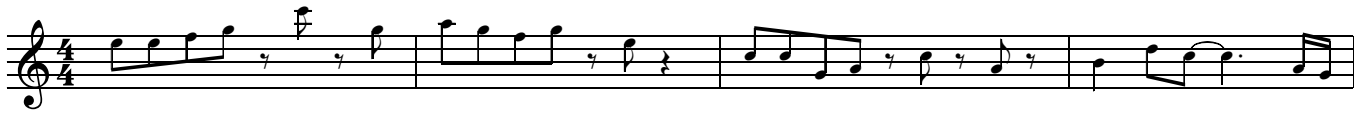


A NEW BEGINNING

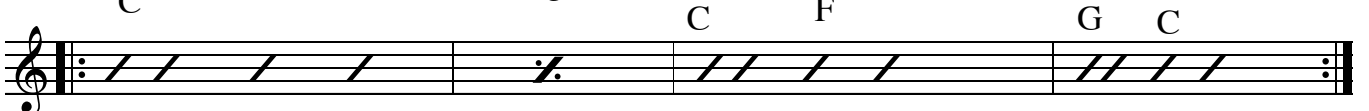
Concert



solo

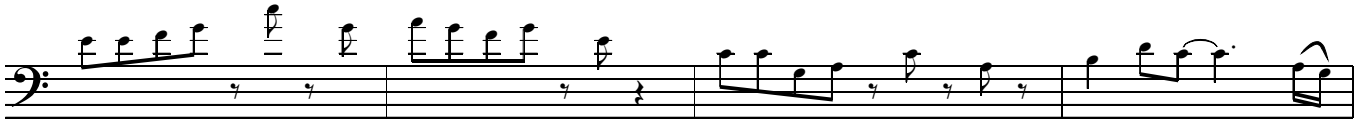
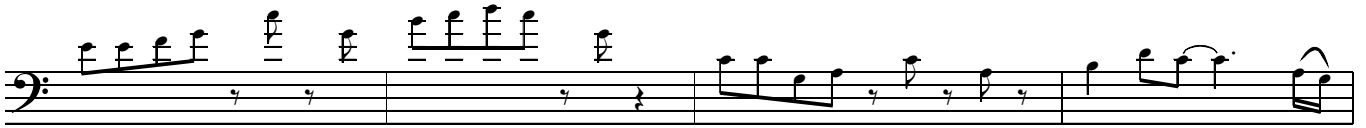
C can use blues scale throughout

solo till guitar riff and again at the end

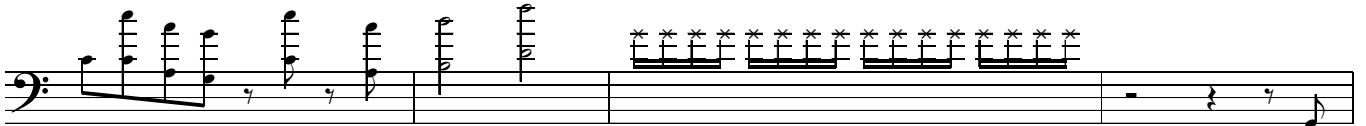


A NEW BEGINNING

Concert bass clef



rhythm section vamp



1.

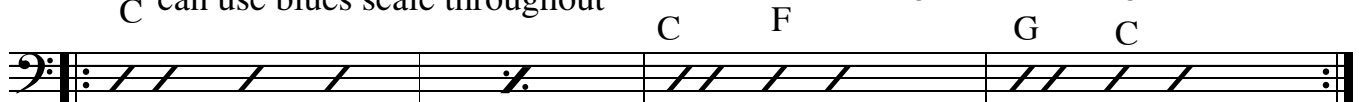


2.



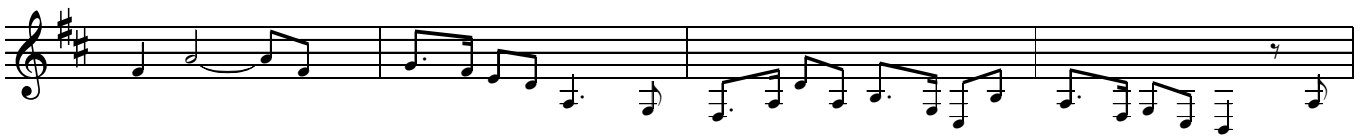
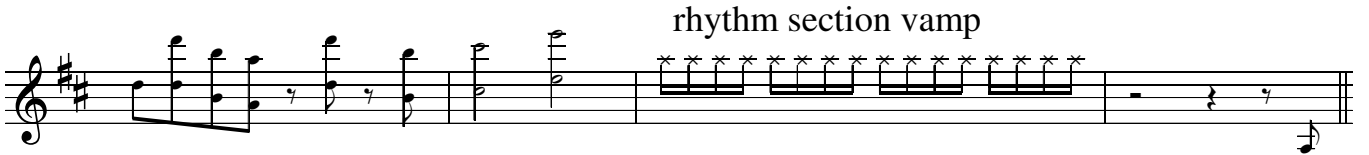
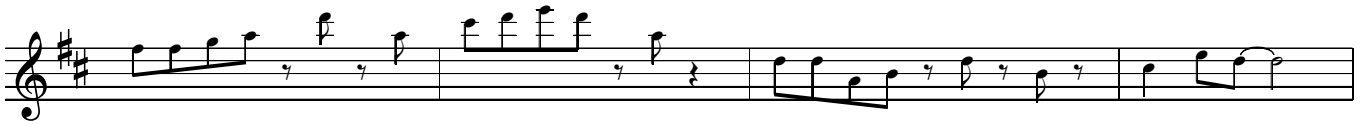
solo C can use blues scale throughout

solo till guitar riff and again at the end



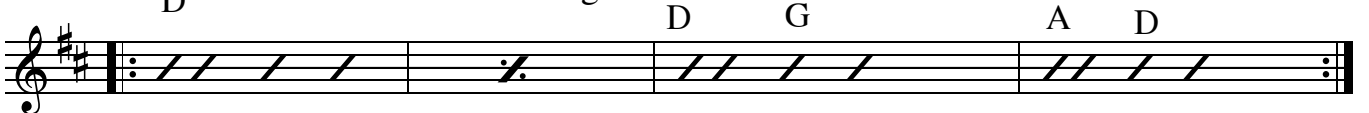
A NEW BEGINNING

Bb pitch



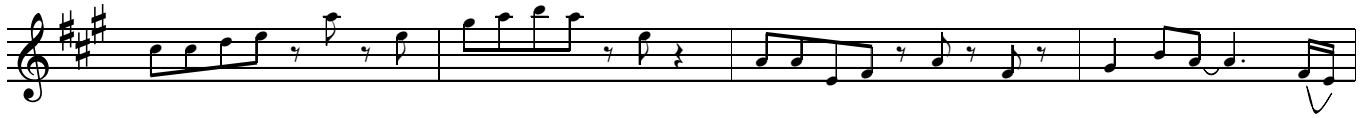
solo D can use blues scale throughout

solo till guitar riff and again at the end

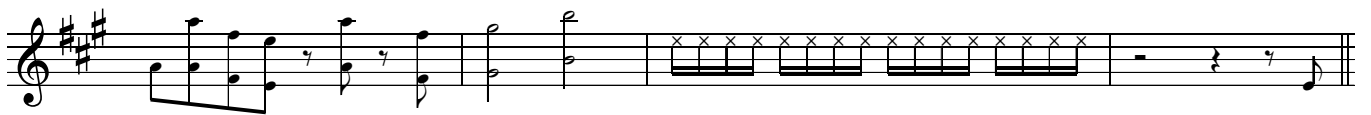


A NEW BEGINNING

Eb pitch



rhythm section vamp



solo can use blues scale throughout

solo till guitar riff and again at the end

A

A

D

E

A

