

Trombone concerto - 3

till ready

when soloist ends 3
snare off

$\text{♩} = 140$

A

mf

Jazz drums

Jazz drums

B

Jazz drums

Jazz drums

mp

C

15 vary it as desired

Jazz drums

Jazz drums

19

D

Jazz drums

23

mp

Jazz drums

26

Jazz drums

28

E

Jazz drums

30

mp

Jazz drums

32

rit.

F

a tempo ♩ = 140

Jazz drums

34

mp

Jazz drums

36

Jazz drums

38

Jazz drums

40

Jazz drums

42

Jazz drums

44

Jazz drums

46

G

something like this

cym

pp

p

Jazz drums

49

Jazz drums

53

Jazz drums

56

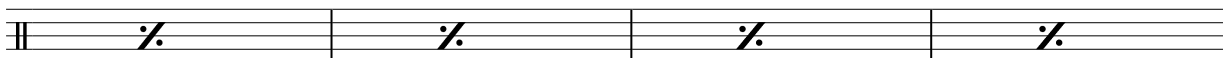
H

elaborate on this sort of thing

p

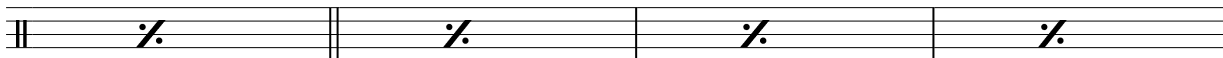
59

Jazz drums

**I**

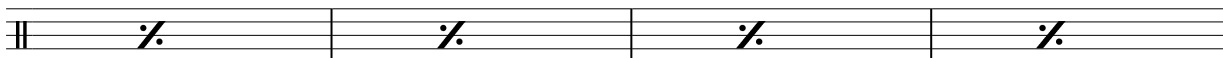
63

Jazz drums



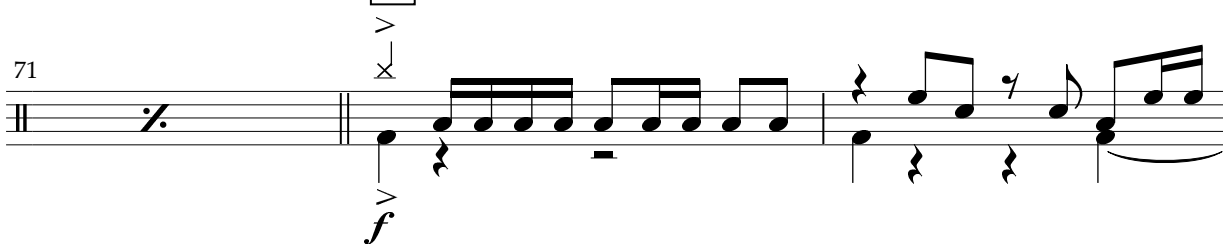
67

Jazz drums

**J**

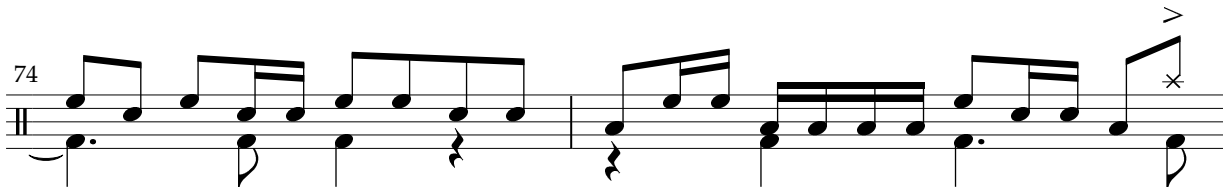
71

Jazz drums



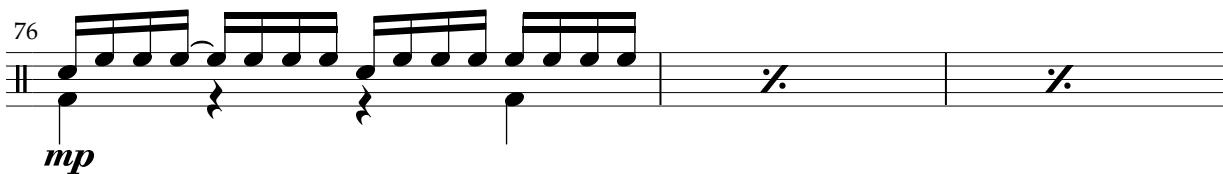
74

Jazz drums



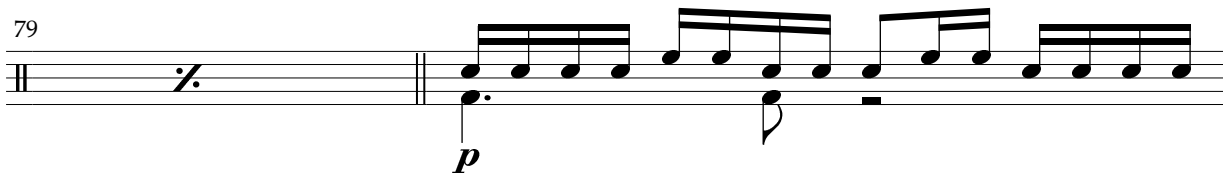
76

Jazz drums

**K**

79

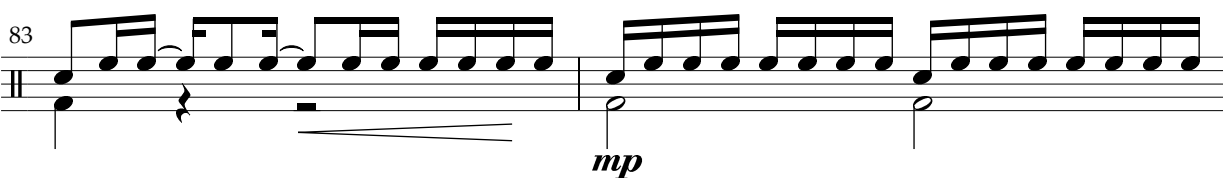
Jazz drums



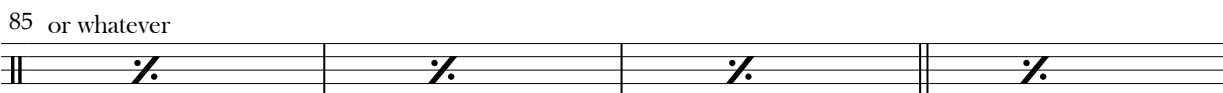
81

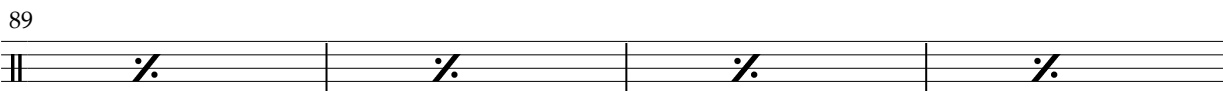
Jazz drums



83 Jazz drums 

L

85 or whatever Jazz drums 


89 Jazz drums 

N

93 Jazz drums 

O

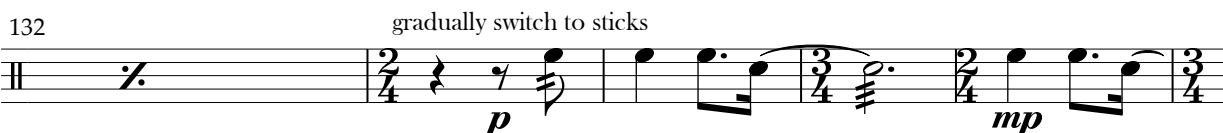
112 brushes on SD stir Jazz drums 

117 Jazz drums 

P

122 Jazz drums 

127 Jazz drums 

132 Jazz drums 

Q

double tempo ♩ = 140

sticks

Jazz drums

137

mf

mp

141 or whatever

Jazz drums

R

Jazz drums

144

mp

Jazz drums

146

Jazz drums

148

Jazz drums

150

S

High Hat

Jazz drums

152

p

Jazz drums

155

T

Jazz drums

158

Jazz drums

161

Jazz drums

164

U

Jazz drums

167

mp

Jazz drums

171

cymbal

Jazz drums

174

f

178

ff

Jazz drums

rit.
till ready

2

f

The notation is for a jazz drum part. It consists of four measures. Measure 178 starts with a double bar line and a bass drum hit marked *ff*, followed by a snare hit marked with an 'x'. Measure 179 has a snare hit marked with an 'x'. Measure 180 has a snare hit marked with an 'x'. Measure 181 has a snare hit marked with an 'x' and a cymbal hit marked with a triangle symbol. Above the staff, there is a measure rest for two measures, labeled '2'. Above the first measure, there is a measure rest for one measure, labeled '178'. Above the second measure, there is a measure rest for one measure, labeled 'rit. till ready'. Above the fourth measure, there is a measure rest for one measure, labeled 'f'.